

STSUPCT_AL_STUART_FOLLOW_THE_LAW

Brand: POL-CHIEF JUSTICE - (B333)

Parent: POLITICAL ADV

Aired: 5/30/2018 9:27:52 AM

Creative Id: 19630326



JUSTICE STUART IS A TRUE CONSERVATIVE



WHO BELIEVES JUDGES SHOULD FOLLOW THE LAW AND NOT MAKE THE LAW.



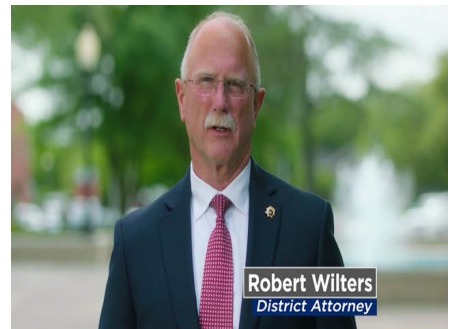
LYN STUART HAS NEARLY THREE DECADES OF EXPERIENCE ON THE BENCH



AND KNOWS THE LAW BETTER THAN ANYONE.



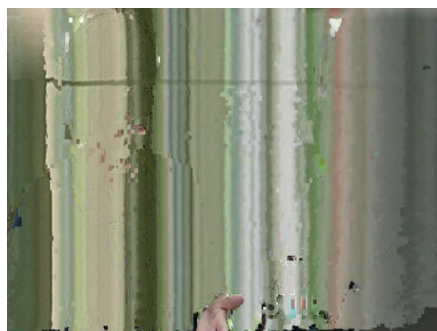
LYN STUART IS A FORMER PROSECUTOR AND JUDGE WITH A PROVEN RECORD



OF BEING TOUGH ON CRIME.



SHE'S TOUGH ALRIGHT.



SHE'S LOOKED A KILLER IN THE EYE AND GIVEN HIM THE DEATH PENALTY.



LYN STUART HAS FIXED OUR COURTS AND WE NEED TO KEEP HER AS OUR CHIEF JUSTICE.





ALABAMA CHIEF JUSTICE LYN STUART.
[PFB LYN STUART].

www.PoliticsOnTV.com

Copyright 2011 Kantar Media/CMAG

1-866-559-CMAG

