



# HSI

Homeland Security  
Investigations

NSID National  
Security  
Investigations

CTOZ Counterterrorism

Division

Exploitation Unit



U.S. Immigration  
and Customs  
Enforcement



# COUNTERTERRORISM AND CRIMINAL EXPLOITATION UNIT (CTCEU)

OVERVIEW



OVERSTAY  
PRIORITIZATION



LEAD RESULTS



STATISTICS



PROFILES



TERRORIST TRACKING  
PURSUIT GROUP



SEVIS EXPLOITATION  
SECTION





(b)(6), (b)(7)(C)



# Mission

To proactively scrutinize known or suspected terrorists and their associates, identify terrorist criminal enterprises, prevent terrorists and other criminals from exploiting the nation's immigration system and to expand the resource equities within the various Law Enforcement Agencies and Intelligence Communities.





# Counterterrorism and Criminal Exploitation Unit (CTCEU)

**TERRORIST TRACKING PURSUIT GROUP (TTPG) TO PROACTIVELY IDENTIFY AND DEVELOP ACTIONABLE INTELLIGENCE ON SUSPECTED NONIMMIGRANT VIOLATORS WHO POSE POTENTIAL NATIONAL SECURITY OR PUBLIC SAFETY CONCERNS TO THE UNITED STATES.**

**STUDENT AND EXCHANGE VISITOR INFORMATION SYSTEM (SEVIS) EXPLOITATION SECTION (SES) IDENTIFIES AND INVESTIGATES SCHOOLS, EXCHANGE VISITOR PROGRAMS, AND INDIVIDUALS WHO EXPLOIT THE VULNERABILITIES OF THE SEVIS SYSTEM.**

**INTELLIGENCE SUPPORT GROUP CTCEU'S ISG MANAGES CRITICAL FUNCTIONS THAT SUPPORT THE EFFICIENT USE OF CTCEU RESOURCES; THE ISG MONITORS, EVALUATES, AND MANAGES THE DELIVERY OF CTCEU'S CONTRACT SUPPORT SERVICES, AND COORDINATES AND PERFORMS A VARIETY OF ADMINISTRATIVE AND MANAGEMENT SERVICES**

**ESSENTIAL TO THE OPERATION OF THE CTCEU.**

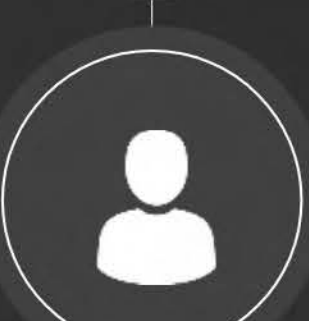


TTPG

SES

# CTCEU INITIATIVES

National Counterterrorism Center (NCTC) Collaboration	Alien Flight Student Program
Open Source Analysis	Foreign Flight Schools
Visa Revocation Program	SEVP Analysis and Operations Center (SAOC) Partnership
International Military Students Absent Without Leave (IMS AWOL) Program	Project Campus Sentinel
Military Accessions Vital to the National Interest (MAVNI)	Visa Lifecycle Program
U.S. Service Academy Candidate Vetting	Domestic Mantis Program





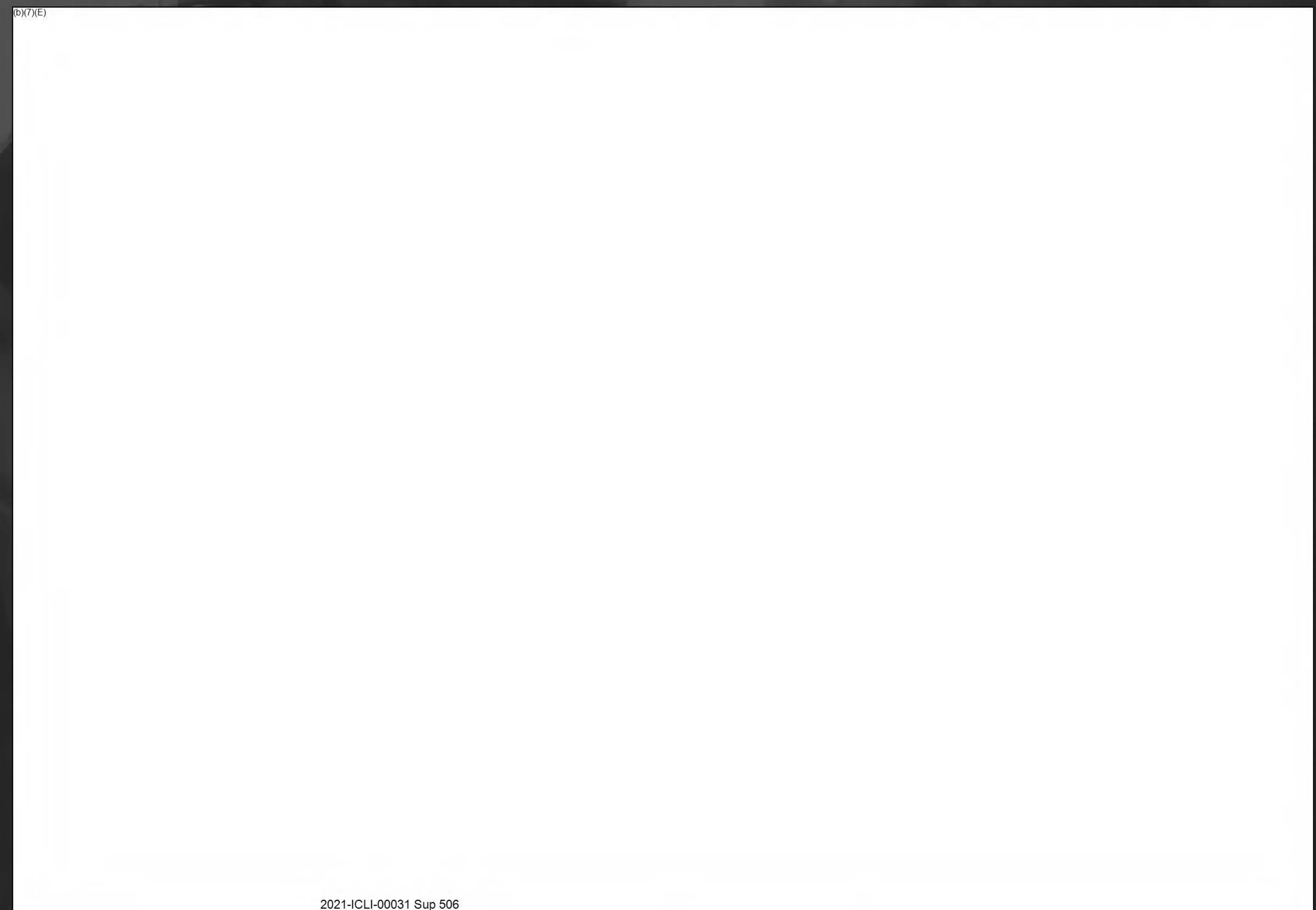
(b)(6), (b)(7)(C)



# CTCEU Overstay

In 2009, ICE established the Compliance Enforcement Advisory Panel (CEAP) to ensure that it uses the latest threat intelligence to target nonimmigrant overstays and status violators who pose the greatest threats to national security and to discuss possible changes based on current threat trends.

# Prioritization



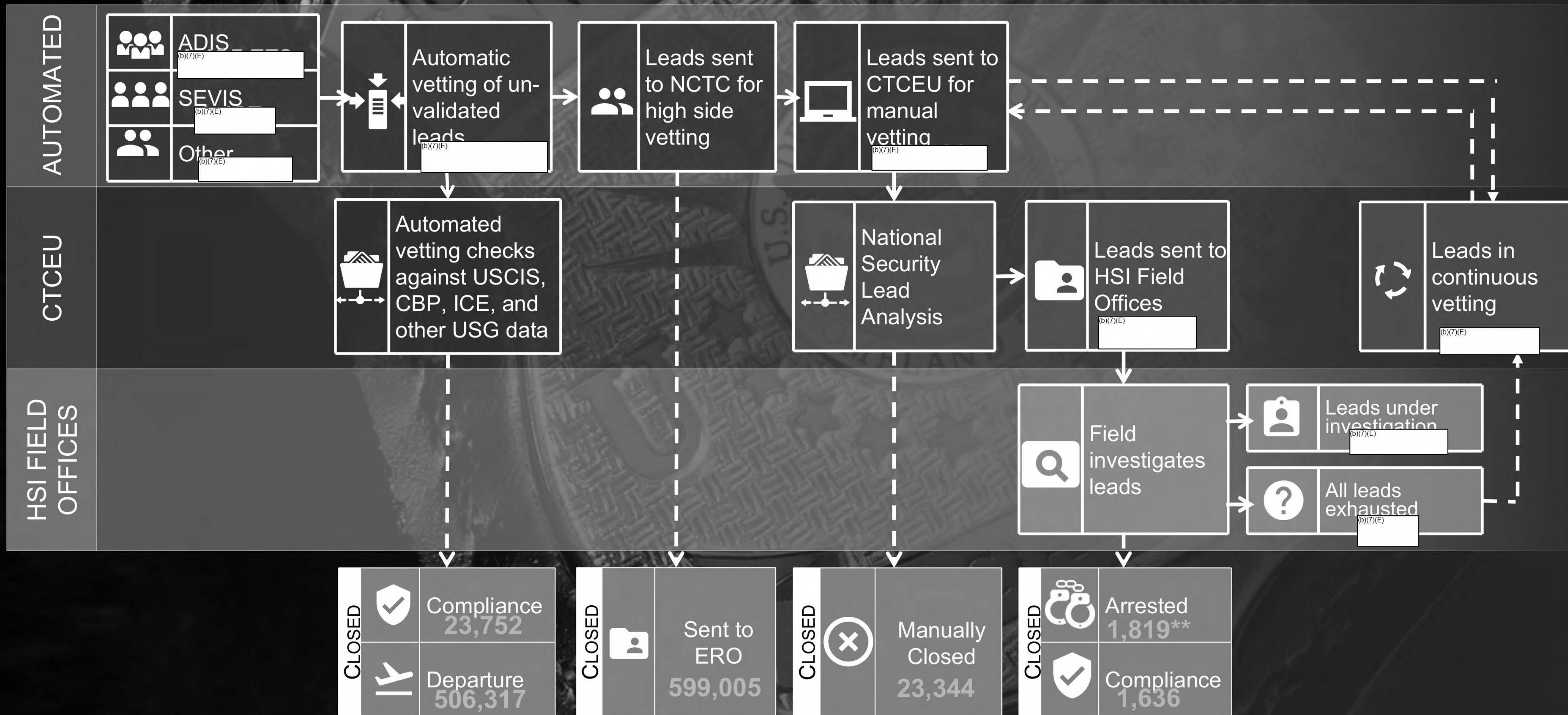
(b)(7)(E)



TTPG

SES

# CTCEU FY 2019 Lead Results



\*4,974 from FY19 imports, 4,697 from previous FYs and/or other programs\*\*265 arrests from FY19 Imports, 1,554 are from other FYs, associates arrested, or field initiated arrests in FY19 (COGNOS)





# TTPG Overview

The TTPG serves as a clearing house for the intake, research, assignment, tracking and reporting of nonimmigrant investigations who pose a potential threat to the United States. Identifies and prioritizes foreign national overstays or status violators based on risk/targeting criteria established by the Compliance Enforcement Advisory Panel (CEAP). Coordinates with the Intelligence Community and other Law Enforcement Partners. Utilizes over 20 DHS and other agency databases in the lead vetting process.





# Open Source Analysis of Intelligence Gaps

TTPG



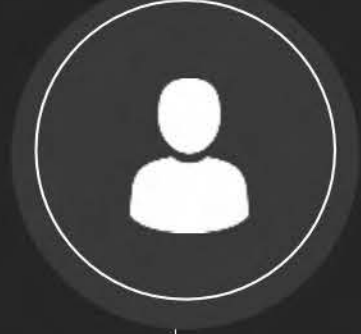
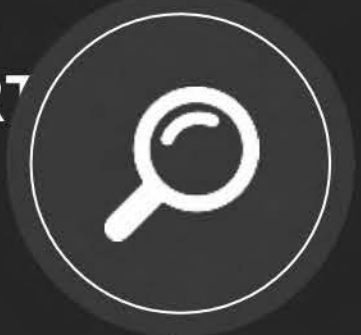
“For Fourth Amendment purposes, individuals do not have a reasonable expectation of privacy in information they have made available to the general public” [ICE Policy 10082.1]

(b)(6), (b)(7)(C)

(b)(7)(E)



TTPG



EXTREMISTSUPPORT



NATIONAL SECURITY

ORGANIZATIONLINKS



NATIONAL SECURITY CONCERNS



DRUG PARAPHERNALIA



FINANCIAL FRAUD/THEFT



CRIMINAL ACTIVITY

CRIMINAL THREATS



IDENTITY THEFT



UNLAWFUL ACTS/ BEHAVIOR



# Open Source Findings



**INTERPOL RED NOTICE EXAMPLE:**

(b)(6), (b)(7)(C), (b)(7)(E)

(b)(6), (b)(7)(C), (b)(7)(E)



Page 512

Withheld pursuant to exemption

(b)(6) ; (b)(7)(C) ; (b)(7)(E)

of the Freedom of Information and Privacy Act



Page 513

Withheld pursuant to exemption

(b)(6) ; (b)(7)(C) ; (b)(7)(E)

of the Freedom of Information and Privacy Act

Page 514

Withheld pursuant to exemption

(b)(6) ; (b)(7)(C) ; (b)(7)(E)

of the Freedom of Information and Privacy Act



# SES Overview

- The SES combats criminal violations of the Student and Exchange Visitor Information System (SEVIS) and the Student and Exchange Visitor Program (SEVP). The SES analyzes and refers criminal investigative leads to HSI field agents related to Immigration Fraud, Organized Crime, Counterterrorism, and Counter Proliferation. People can exploit SEVIS vulnerabilities for nefarious purposes including human smuggling and trafficking, financial fraud, immigration and document fraud, and intellectual property crimes.



(b)(6), (b)(7)(C), (b)(7)(E)

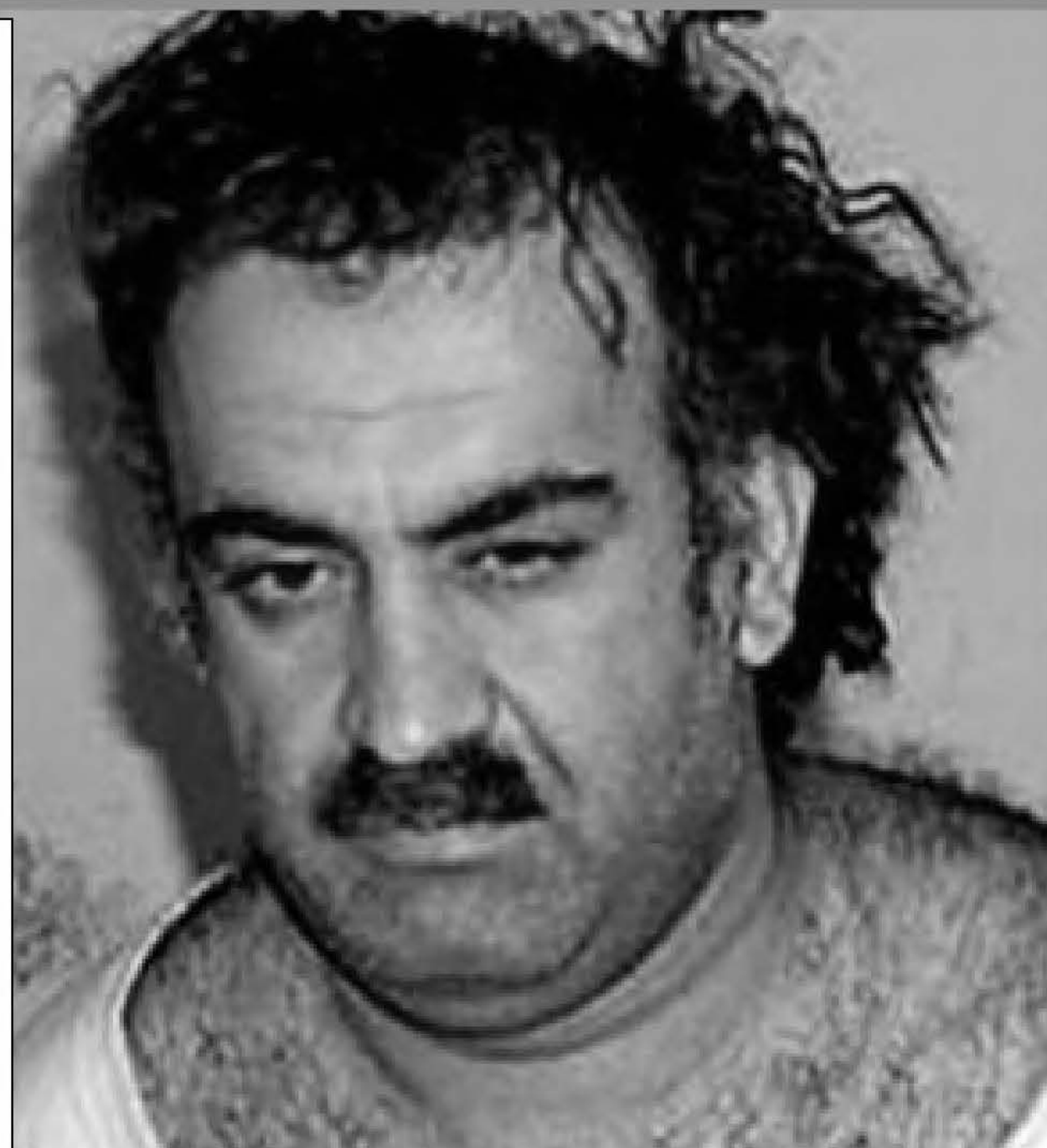


# Why a Student Visa?

An analysis of 60 terrorists who have exploited F/M/J visas revealed



(b)(6), (b)(7)(C)



(b)(6), (b)(7)(C)

# KHALID SHAIKH MOHAMMED



Manila air pilot who is considered the mastermind of September 11<sup>th</sup> first entered the US as an F-1 in 1983



He attended Chowan College and North Carolina Agricultural and Technical State University



In 2008, he was charged with war crimes and mass murder by the US Military

# Why a Student Visa?

An analysis of 60 terrorists who have exploited F/M/J visas revealed



Mobility



Length of Stay



Ability to Work



Schools That Lack Accountability And Oversight



Specialized Education/Training



Institutional Knowledge And Skillset To Return Home



STEM Fields Can Work Up To 36 Months

# Why a Student Visa?

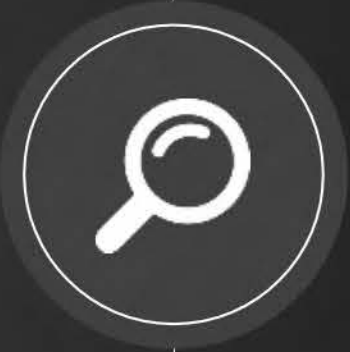


# SES and Counterterrorism



# SEVP Analysis and Operations Center

The Student and Exchange Visitor Program (SEVP) is the ICE component that administers the Student and Exchange Visitor Information System (SEVIS) that tracks international students in the United States. The SEVP Analysis and Operations Center (SAOC) is a section within SEVP responsible for monitoring schools for ongoing administrative compliance with regulatory reporting requirements. In many cases, schools have both criminal and administrative violations. Schools not adhering to reporting requirements present a threat to the national security as their students are not properly monitored.





1

Project Campus Sentinel is aimed at preventing the criminal exploitation of the Student and Exchange Visitor Program (SEVP) by improving direct communications between designated school officials (DSOs) and local HSI agents

HSI seeks to increase school officials' knowledge of how regulatory requirements play heavily into criminal investigations and the role that DSOs may play in those investigations

2

3

HSI seeks the assistance of school officials in conducting investigations of non-compliant schools and students

HSI is also asking for assistance from school officials in identifying those who may be possible public safety and/or national security concerns

4

# Project Campus Sentinel (PCS)



SES





Q&A

Protecting the Homeland  
with Honor, Service, and  
Integrity

