

STSUPCT/WI GABLEMAN SHADOWY SPECIAL INTERESTS

Brand: POL-SUPREME COURT (B333)

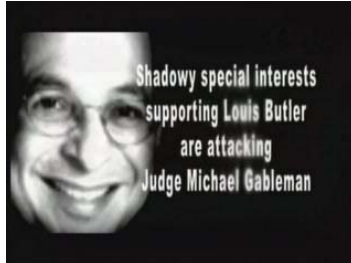
Parent: POLITICAL ADV

Aired: 03/14/2008 - 03/15/2008

Creative Id: 6206808



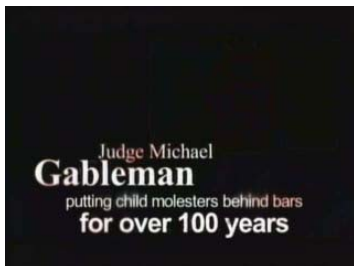
[Announcer]: Unbelievable. Shadowy special interests supporting Louis Butler are attacking Judge Michael



Gableman. It's not true. Judge, District Attorney Michael Gableman



has committed his life to locking up criminals to keep families safe, putting



child molesters behind bars for over 100 years. Louis Butler worked to put



criminals on the street, like Reuben Lee Mitchell who raped and 11-year-old girl



with learning disabilities. Butler found a loophole, Mitchell went on to molest



another child. Can Wisconsin families feel safe with Louis Butler on the Supreme Court?



[PFB]: GABLEMAN FOR SUPREME COURT

AdDetector 

www.PoliticsOnTV.com

Copyright 2008 TNS Media Intelligence/CMAG

 media intelligence/cmag

1-866-559-CMAG